

Zen gardens

Research and design a Japanese Zen garden

Aim: Research the design, history and symbolism of Zen gardens; create a garden design



Zen gardens

Resources:

Dry sand, trays, stones of various sizes and shapes, twigs; table fork to rake the sand.

- A Zen garden is designed to evoke feelings of tranquillity, calmness and peace, with associated mental as well as psychological health benefits.
- Rocks and gravel or sand are used to recreate the essence of nature. The designs are simple and use only a small palette of materials.
- Swirling patterns are raked into the sand or gravel to represent water.



© Mary Jackson PLL

Compare and contrast with the Paradise Gardens – opposite - half the class could research and model one type and the other half the other type.

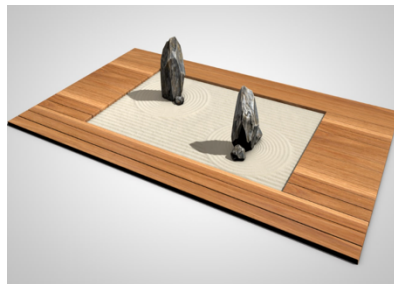
Design a plan for a Zen garden, to include key important features, and then make a model, using the resources outlined above.

Key vocabulary:

ritual, meditation, Shintoism

Success criteria:

- ✓ I can use written material and the internet to find facts about Japanese Zen gardens.
- ✓ I can describe the features and meaning of the features in a Japanese Zen garden.
- ✓ I can design and make a model Japanese Zen garden.



Paradise gardens

Research and design an Islamic paradise garden

Aim: Research the design, history and symbolism of Islamic paradise gardens; create a garden design



paradise gardens

Resources:

Junk modelling materials and pruned plant material from trees and shrubs in the school grounds.

- Paradise gardens are formal, symmetrical and often enclosed.
- They are usually rectangular, with four quadrants divided by water rills and a pond at the centre.
- Fruit trees and flowers are planted in the quadrants.
- Symbolism is evident throughout and will engage pupils in their research.



Compare and contrast with the Zen gardens – opposite - half the class could research and model one type and the other half the other type.

More springboards:

- Religious Education Learning Springboards: Islam
- Use this activity to focus on pattern, symmetry and sequencing in maths.

Key vocabulary: symmetry, prayer, meditation

Success criteria:

- ✓ I can use written material and the internet to find facts about Islamic paradise gardens
- ✓ I can describe the features and meaning of the features in a paradise garden
- ✓ I can design and make a model Islamic paradise garden

Image of the Generalife, Granada, by Tuxyso / Wikimedia Commons, CC BY-SA 3.0, <https://commons.wikimedia.org/w/index.php?curid=31613028>

